

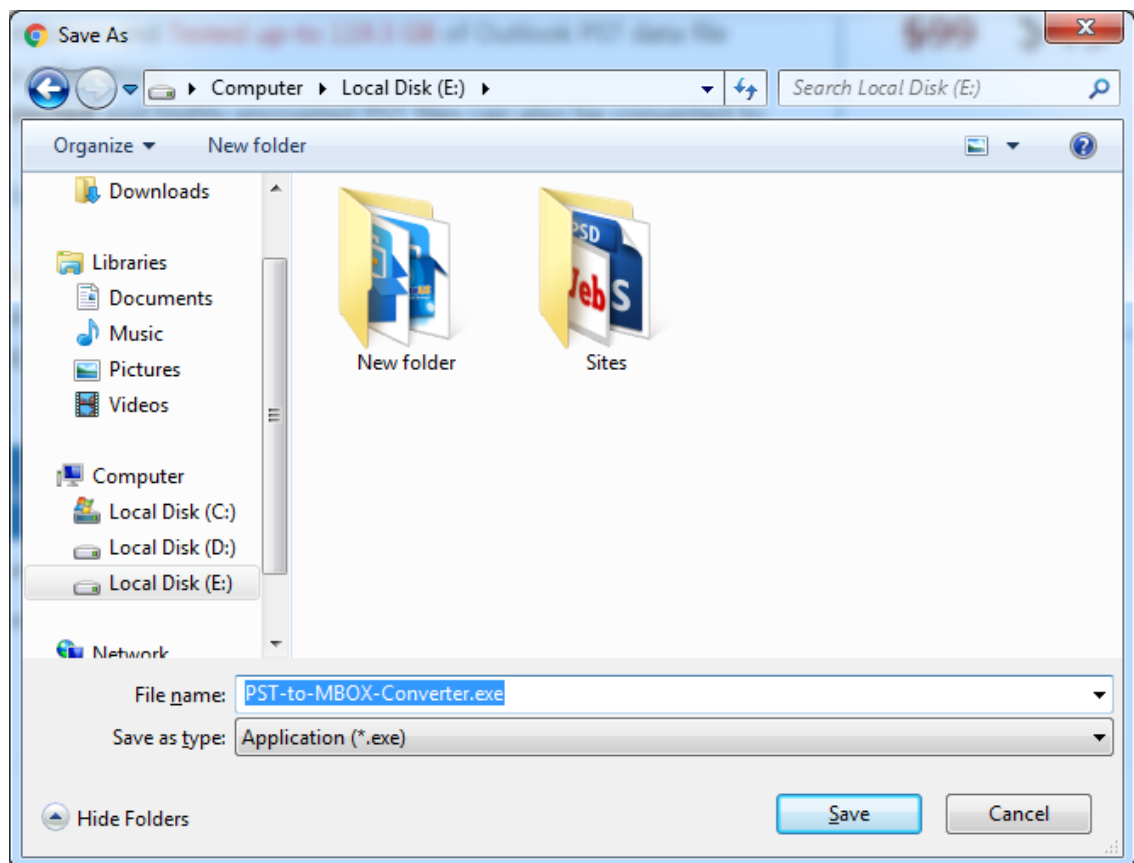


KDETools

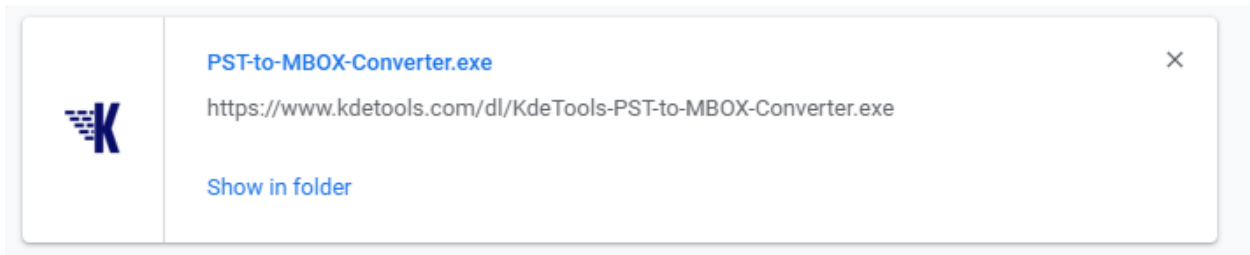
## PST to MBOX Converter

### Step to Install

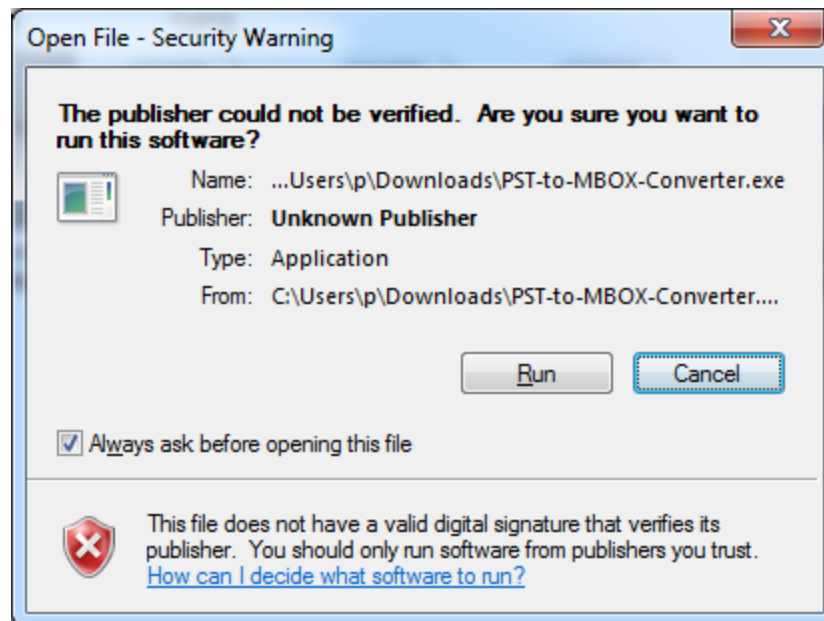
1. When Opening Dialog Box Appears Click **Save File**.



2. When Downloads Windows Appears open a file in a **folder**.



3. When Security Warning Dialog Box Appears, **Click Run**.



### System Requirements:

- Support** : Windows 10, 8.1, 8, 7 & all below Windows version
- Processor** : Intel® Pentium 1 GHz processor(x86, x64) or equivalent
- RAM** : 2GB of RAM is recommended
- Hard Disk Space** : Minimum 100 MB for installation is required